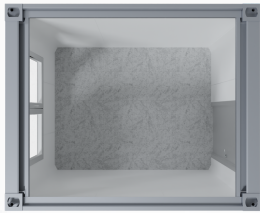


10ft container range



UNIVERSAL 10-FOOT CONTAINER

Art.no UC-10-0001-00000
Area 7,3 m²
3,000 mm × 2,435 mm × H2,890 mm
Ceiling height 2,500 mm

Features

- Exterior door 900 mm × 2100 mm. RAL9003
- Window approx. 1400 mm × 1500 mm with aluminum roller shutter
- Electrical installation 400/230 V, 50 Hz
- Electric input and output CEE 400 V/32 A
- Surface-mounted light fixtures, 2 × 36 W
- Light switches
- 2 empty electrical boxes in the frame corners
- Electric convector 2 kW with thermostat
- Connected load: 3.0 kW



20ft container range



UNIVERSAL 20-FOOT CONTAINER



Art.no UC-20-0001-00000
Area 15 m²
6,055 mm × 2,435 mm × H2,890 mm
Ceiling height 2,500 mm

Features

- Exterior door 900 mm × 2100 mm. RAL9003
- Window approx. 1400 mm × 1500 mm with aluminum roller shutter
- Electrical installation 400/230 V, 50 Hz
- Electric input and output CEE 400 V/32 A
- Surface-mounted light fixtures, 4 × 36 W
- Light switches
- 2 empty electrical boxes in the frame corners
- Electric convector 2 kW with thermostat
- Connected load: 3.0 kW



UNIVERSAL 20-FOOT CONTAINER



Art.no UC-20-0002-00000
Area 15 m²
6,055 mm × 2,435 mm × H2,890 mm
Ceiling height 2,500 mm

Features

- Exterior door 900 mm × 2100 mm. RAL9003
- Entrance wind protection with interior door
- Window approx. 1400 mm × 1500 mm with aluminum roller shutter
- Electrical installation 400/230 V, 50 Hz
- Electric input and output CEE 400 V/32 A
- Surface-mounted light fixtures, 4 × 36 W
- Light switches
- 2 empty electrical boxes in the frame corners
- Electric convector 2 kW with thermostat
- Connected load: 3.0 kW



20-FOOT CONTAINER WITH WC



LAYOUT SAMPLE

Art.no UC-20-0004-00000

Area 15 m²

6,055 mm x 2,435 mm x H2,890 mm

Ceiling height 2,500 mm

Features

- 1 WC
- 1 washbasin
- 1 hot water tank
- Exterior door 900 mm x 2100 mm, RAL9003
- Entrance wind protection with interior door
- Window approx. 1400 mm x 1500 mm with aluminum roller shutter
- Electrical installation 400/230 V, 50 Hz
- Electric input and output CEE 400 V/32 A
- surface-mounted light fixtures, 4 x 36 W
- Light switches
- 2 empty electrical boxes in the frame corners
- Electric convector 2 kW with thermostat
- Connected load: 9.0 kW

20-FOOT CONTAINER WITH SHOWER AND WC



LAYOUT SAMPLE

Art.no UC-20-0005-00000

Area 15 m²

6,055 mm x 2,435 mm x H2,890 mm

Ceiling height 2,500 mm

Features

- 1 WC
- 1 washbasin
- 1 hot water tank
- 1 shower stall
- Exterior door 900 mm x 2100 mm, RAL9003
- Entrance wind protection with interior door
- Window approx. 1400 mm x 1500 mm with aluminum roller shutter
- Electrical installation 400/230 V, 50 Hz
- Electric input and output CEE 400 V/32 A
- surface-mounted light fixtures, 4 x 36 W
- Light switches
- 2 empty electrical boxes in the frame corners
- Electric convector 2 kW with thermostat
- Connected load: 9.0 kW

20-FOOT CONTAINER WITH 5 WC



Art.no SC-20-0006-00000

Area 15 m²

6,055 mm x 2,435 mm x H2,890 mm

Ceiling height 2,500 mm

Features

- 5 WC
- 4 washbasin
- 1 hot water tank
- Exterior door 900 mm x 2100 mm, RAL9003x
- Window approx. 700 mm x 1500 mm
- Electrical installation 400/230 V, 50 Hz
- Electric input and output CEE 400 V/32 A
- Surface-mounted light fixtures, 4 x 36 W
- Light switches
- 2 empty electrical boxes in the frame corners
- Electric convector 2 kW with thermostat
- Connected load: 5.0 kW

20-FOOT CONTAINER WITH 2 SHOWERS AND 2 WC



Art.no SC-20-0007-00000

Area 15 m²

6,055 mm x 2,435 mm x H2,890 mm

Ceiling height 2,500 mm

Features

- 2 WC
- 4 washbasin
- 1 hot water tank
- 2 shower stall
- Exterior door 900 mm x 2100 mm, RAL9003
- Entrance wind protection with interior door
- Window approx. 700 mm x 1500 mm
- Electrical installation 400/230 V, 50 Hz
- Electric input and output CEE 400 V/32 A
- Surface-mounted light fixtures, 4 x 36 W
- Light switches
- 2 empty electrical boxes in the frame corners
- Electric convector 2 kW with thermostat
- Connected load: 5.0 kW



20-FOOT CONTAINER WITH CHANGING CABINS



Art.no SC-20-0008-00000

Area 15 m²

6,055 mm x 2,435 mm x H2,890 mm

Ceiling height 2,500 mm

Features

- 1 WC
- 1 washbasin
- 1 hot water tank
- 1 shower stall
- 15 changing cabins 300 mm x 500 mm H1800 mm
- Exterior door 900 mm x 2100 mm, RAL9003
- Window approx. 700 mm x 1500 mm
- Electrical installation 400/230 V, 50 Hz
- Electric input and output CEE 400 V/32 A
- Surface-mounted light fixtures, 4 x 36 W
- Light switches
- 2 empty electrical boxes in the frame corners
- Electric convector 2 kW with thermostat
- Connected load: 5.0 kW

20-FOOT CONTAINER WITH CHANGING CABINS



Art.no SC-20-0009-00000

Area 15 m²

6,055 mm x 2,435 mm x H2,890 mm

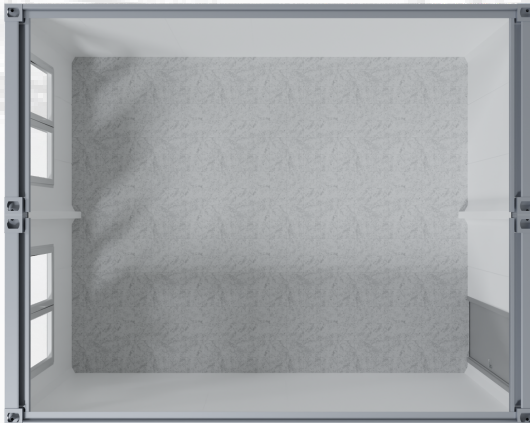
Ceiling height 2,500 mm

Features

- 4 washbasin
- 1 hot water tank
- 2 shower stall
- 15 changing cabins 300 mm x 500 mm H1800 mm
- Exterior door 900 mm x 2100 mm, RAL9003
- Window approx. 700 mm x 500 mm
- Electrical installation 400/230 V, 50 Hz
- Electric input and output CEE 400 V/32 A
- Surface-mounted light fixtures, 4 x 36 W
- Light switches
- 2 empty electrical boxes in the frame corners
- Electric convector 2 kW with thermostat
- Connected load: 5.0 kW

20+20ft container range

UNIVERSAL 20+20-FOOT CONTAINER



Art.no UC-40-0010-00000

Area 30 m²

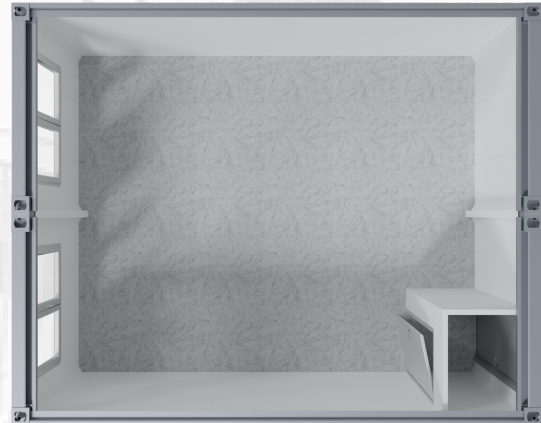
6,055 mm x 4,875 mm x H2,890 mm

Ceiling height 2,500 mm

Features

- Exterior door 900 mm x 2100 mm, RAL9003
- Window approx. 1400 mm x 1500 mm with aluminum roller shutter
- Electrical installation 400/230 V, 50 Hz
- Electric input and output CEE 400 V/32 A
- Surface-mounted light fixtures, 8 x 36 W
- Light switches
- 6 empty electrical boxes in the frame corners
- 2 Electric convectors 2 kW with thermostat
- Connected load: 5.0 kW

UNIVERSAL 20+20-FOOT CONTAINER



Art.no UC-40-0011-00000

Area 30 m²

6,055 mm x 4,875 mm x H2,890 mm

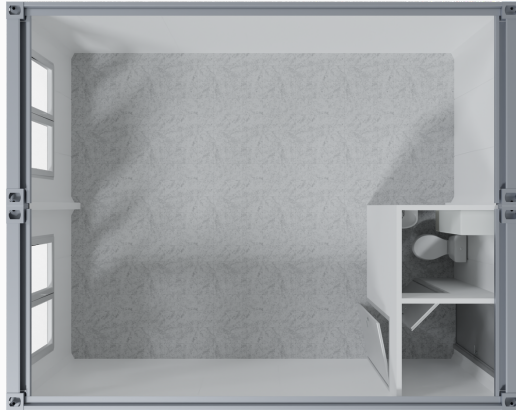
Ceiling height 2,500 mm

Features

- Exterior door 900 mm x 2100 mm, RAL9003
- Entrance wind protection with interior door
- Window approx. 1400 mm x 1500 mm with aluminum roller shutter
- Electrical installation 400/230 V, 50 Hz
- Electric input and output CEE 400 V/32 A
- Surface-mounted light fixtures, 8 x 36 W
- Light switches
- 6 empty electrical boxes in the frame corners
- 2 Electric convectors 2 kW with thermostat
- Connected load: 5.0 kW



20+20-FOOT CONTAINER WITH WC



LAYOUT SAMPLE

Art.no UC-40-0012-00000

Area 30 m²

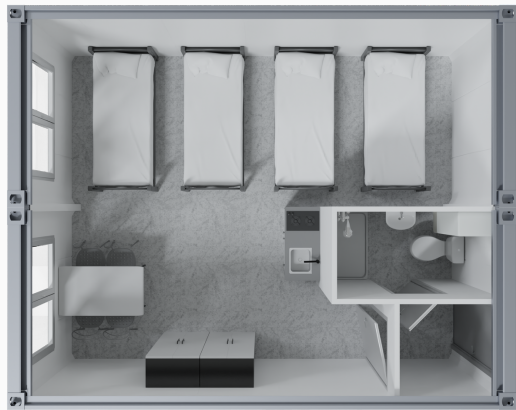
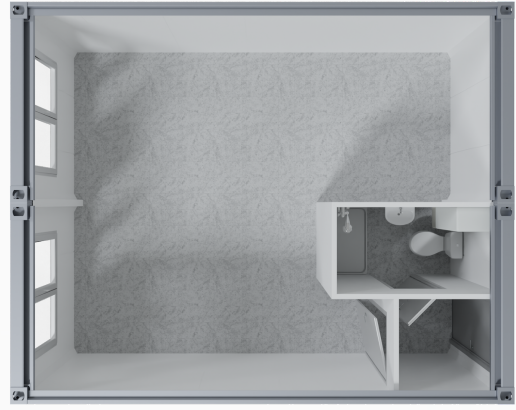
6,055 mm × 4,875 mm × H2,890 mm

Ceiling height 2,500 mm

Features

- 1 WC
- 1 washbasin
- 1 hot water tank
- Exterior door 900 mm × 2100 mm. RAL9003
- Entrance wind protection with interior door
- Window approx. 1400 mm × 1500 mm with aluminum roller shutter
- Electrical installation 400/230 V, 50 Hz
- Electric input and output CEE 400 V/32 A
- Surface-mounted light fixtures, 8 × 36 W
- Light switches
- 6 empty electrical boxes in the frame corners
- 2 Electric connectors 2 kW with thermostat
- Connected load: 9.0 kW

20+20-FOOT CONTAINER WITH SHOWER AND WC



LAYOUT SAMPLE

Art.no UC-40-0013-00000

Area 30 m²

6,055 mm × 4,875 mm × H2,890 mm

Ceiling height 2,500 mm

Features

- 1 WC
- 1 washbasin
- 1 hot water tank
- 1 shower stall
- Exterior door 900 mm × 2100 mm. RAL9003
- Entrance wind protection with interior door
- Window approx. 1400 mm × 1500 mm with aluminum roller shutter
- Electrical installation 400/230 V, 50 Hz
- Electric input and output CEE 400 V/32 A
- Surface-mounted light fixtures, 8 × 36 W
- Light switches
- 6 empty electrical boxes in the frame corners
- 2 Electric connectors 2 kW with thermostat
- Connected load: 9.0 kW

General Features

- Hot-dip galvanized 3-4mm steel frame construction
- Supporting structure that can be stacked up to three levels
- Coating with 80-100µm anti-corrosion primer and 70-80µm weather resistant exposure to paint.
- Corrosivity categories/durability C2-H, C3-M (EN ISO 12944-5)
- Floor load on the ground floor 300 kg / m²
- Permissible floor load on the 2nd and 3rd floors, 200 kg / m² each
- Interior decor - white RAL 9003
- External decor - white RAL 9003/RAL7035/RAL7040 or painted according RAL catalog (more in the options section)

Roof/ceiling

- The roof made from a 0.75 mm thick galvanized steel sheet in the shape of a trapezoid
- Under the trapezoidal sheet metal structure, a 100 mm thick rigid foam insulation is installed

Floor

- Base plate (floor slab), consisting of cement-bonded particle boards 16 mm thick - Vapor barrier made of PVC film, 0.150 microns - rigid foam 100 mm. Galvanized steel sheets
- Flooring. PVC (gray and white marbled), white skirting boards around the perimeter.

Walls

- External walls are made of multi-layer wall elements made of rigid polyurethane foam 50-100 mm thick or 100-120 mm rock wool. Sheet metal is coated on both sides.

